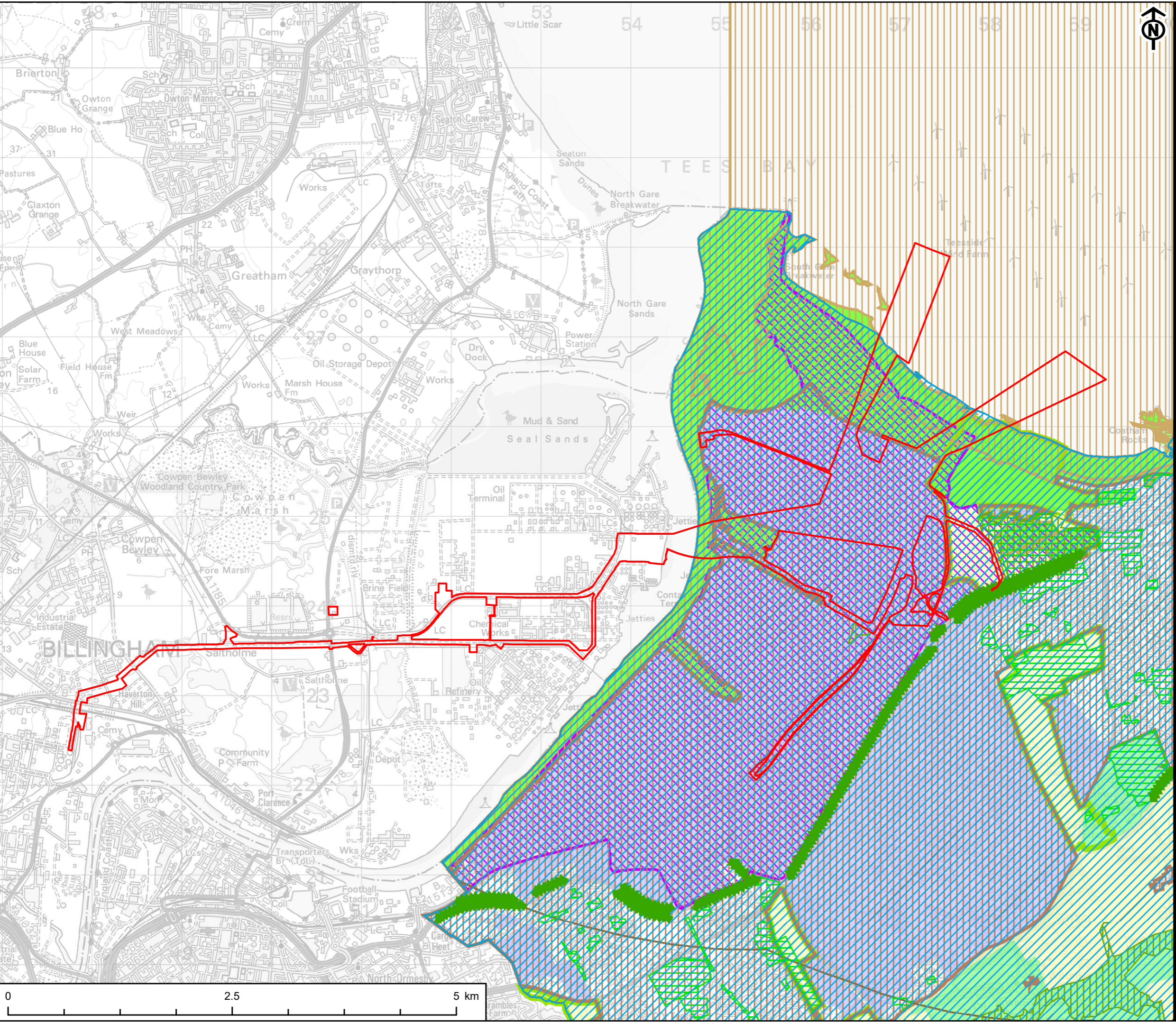




APPLICANTS
NZN POWER LTD. AND NZNS STORAGE LTD.

- KEY**
- Site Boundary
 - N 4 6km Special Protection Areas (SPA) Buffer Zone
 - LS 4 & ED 6 South Tees Development Corporation
 - SD 6 30km wind farm safeguarding area for Durham Tees Valley Airport
 - N 4 Local Wildlife Sites (LWS)
 - N 2 Strategic Landscape Areas
 - SD 3 Development Limits
 - N 4 Sites of Special Scientific Interest (SSSI)
 - N 4 Special Protection Areas (SPA)
 - ED 6 Protecting Employment Areas
 - N 3 Primary Open Spaces
 - N 2 Green Wedges
 - N 1 Restoration Landscape Areas
 - N 1 Sensitive Landscape Areas

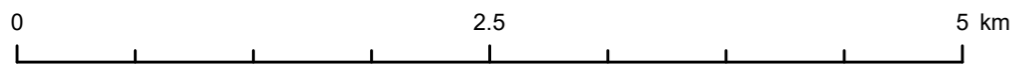


TITLE
FIGURE 10-22
REDCAR AND CLEVELAND LOCAL PLAN

REFERENCE
NZN_210430_ES_10-22_v1

SHEET NUMBER
1 of 1

DATE
30/04/2021



This drawing has been produced for the use of AECOM's client. It may not be used, modified or relied upon by third parties, except as agreed by AECOM or as required by law. AECOM accepts no responsibility, and denies any liability whatsoever, for any party that uses or relies upon this drawing without AECOM's express written consent. All dimensions are indicative and in metres unless otherwise noted. Do not scale this document.